

**GATESHEAD  
COLLEGE**



# **YOUR COLLEGE MONEY GUIDE.**

**Support for students aged over 19  
years old in Further Education.**

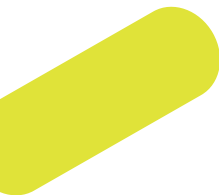
**2026/2027**

**YOUR  
STUDENT  
SERVICES.**

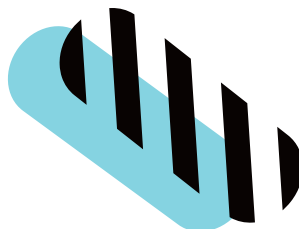


# YOUR SUPPORT.

Support with course related costs	4
Help with course fees	6
Travel	8
Course grants	8
Childcare support	9
19+ Bursary	10
Gateshead College Foundation	11
How do I apply	12
Confirmation of course details	13
Child Benefit at 19	13
Welfare benefits	14
What to do in an emergency	14
How to contact us	15



If you know someone who requires this information in an alternative format, e.g. large print, Braille, audio or another language or help with understanding the information, please call 0191 490 4611 or email [start@gateshead.ac.uk](mailto:start@gateshead.ac.uk)



# HELLO.

**We've put together this guide to help you understand what financial support is available and how to get it. Whether you need help with travel, equipment or childcare, this guide breaks it all down in a way that's easy to follow.**



# SUPPORT WITH COURSE RELATED COSTS.

**If you're aged 19 or over and worried about the cost of studying, you may be able to get financial support from the college. We offer help through two main funds:**

- 19+ Discretionary Learner Support Fund (DLSF)
- Advanced Learner Loan Bursary Fund (ALLBF)

These funds are designed to support learners who are experiencing financial hardship with course-related costs.

---

## **Am I eligible?**

Funding isn't guaranteed, as it depends on the money available and individual circumstances. However, you'll usually need to meet the following:

- You must be personally eligible i.e. Home student status
- Your household income must be below a certain level; however we can use discretion in exceptional circumstances
- Your course must be eligible for support (see table overleaf)

- You must be confirmed as attending your course
- Your attendance must meet the requirements (this is currently 92% however we do take personal circumstances into consideration for example, caring responsibilities or disabilities)

The income assessment and application form are the same for most types of support (except fee support).

**Important:** If you're eligible for an Advanced Learner Loan but choose not to take it out (fully or partially), you won't be able to access the Advanced Learner Loan Bursary Fund.

## Course Eligibility

Course	19+ studying up to Level 2 or studying Level 3 and receive Level 3/Low Income entitlement	19+ studying Level 3 (Advanced Learner Loan)	Full cost, Level 3 Self-Funded, International
<b>Discretionary Financial Support</b>	19+ Discretionary Learner Support Fund	Advanced Learner Loan Bursary Fund	None available

## Categories of support

	19+ Discretionary Learner Support Fund	Advanced Learner Loan Bursary Fund
<b>Childcare</b>	✓	✓
<b>Course grants</b>	✓	✓
<b>Travel costs</b>	✓	✓
<b>Fees</b>	✓	✗
<b>19+ Monthly Bursary</b>	✓	✓

# HELP WITH COURSE FEES.

## Fee remission

You may not have to pay course fees (known as fee remission) if you are:

- Receiving certain benefits such as:
  - Income-based Jobseeker's Allowance
  - Universal Credit
  - Employment and Support Allowance (Work-Related Activity Group)
- Actively looking for work and taking your course to improve your chances of getting a job

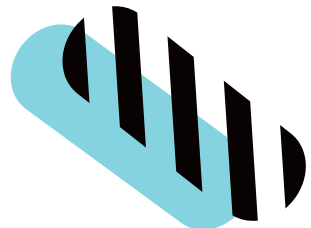
You may also qualify if you are:

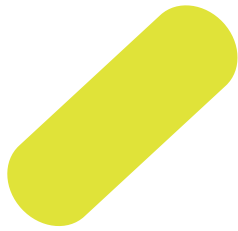
- Employed and earning less than £32,000 per year (gross)
- Eligible for a Level 2 or Level 3 entitlement (depending on your age and previous qualifications)

## Advanced Learner Loan (Level 3–6 courses)

If you're studying a Level 3–6 course and not eligible for fee remission, you'll usually need to apply for an Advanced Learner Loan.

- Available to learners aged 19+
- Helps cover the cost of your course fees
- You only start repaying when you've finished your course and earn £25,000 or more per year
- Repayments are taken automatically through the tax system





## Fee Support (for low income)

If you don't qualify for fee remission, you can apply for fee support based on a low household income.

- Available for courses up to Level 2 only
- We can cover up to 100% of the fees, to a maximum of £1,000
- A separate application form is required

If your application is successful:

- You'll receive confirmation in writing
- You must wait for this before enrolling
- Bring your confirmation with you when you enrol

If your course fees are higher than the amount awarded, you'll need to pay the remaining balance yourself.

We recommend applying for fee support as early as possible, as funding is limited and can run out quickly.



For further information regarding any of these fee options you need to enquire at the point of enrolment or email **[start@gateshead.ac.uk](mailto:start@gateshead.ac.uk)**

## Travel costs

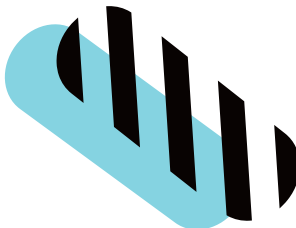
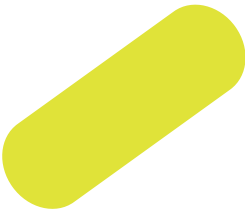
If you live more than a mile from college, you might get help with travel. What you receive will depend on your main method of transport and where you travel from. It could be a student travel ticket (Go North East) or money paid every half term.

If your local council has a travel scheme, apply there first. If you can't use public transport because of a disability, get in touch with your local council in the first instance to see how they can support you to get to college.



## Course grants

Need help buying a uniform or kit for your course? You might get a grant paid straight into your bank account to help towards this (it may not cover the full costs).



## Childcare support

You may be able to get help with childcare costs if you do not have a partner who can look after your child(ren) while you study.

Before applying, you'll need to arrange a childcare provider, as we can't assess your application without this in place.

- All payments are made directly to your childcare provider
- You will be responsible for any childcare costs before your funding is approved
- If your chosen provider charges more than our maximum award, you'll need to cover the difference yourself

Our maximum awards are:

- Nursery
  - full day £45, half day £30
- Childminder
  - £11 per hour
- Out of school club
  - AM £5, PM £10

Childcare awards are based on your course timetable, meaning we'll only fund childcare for the times you're scheduled to attend college (this can also include placements). If you need childcare outside of these hours, you'll be responsible for covering those additional costs yourself.

We strongly recommend applying for childcare support as early as possible, as funding is limited and can run out quickly.

## 19+ Monthly Bursary

You may be able to receive additional financial support if you are aged 19+ and studying a full-time Level 2 or Level 3 course (other conditions may apply).

This bursary is designed to help with study-related costs and to contribute towards any loss of income while you are studying – it is not intended to replace your income or benefits.

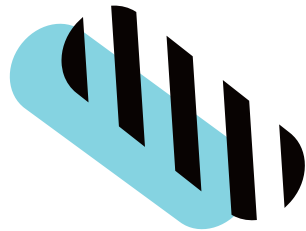
To be eligible, you must:

- Not be receiving welfare benefits in your own right, as this bursary would be counted as income by the Department for Work and Pensions (DWP)
- Not live at home in a household receiving Child Benefit or Child Tax Credit for you
- Not have a partner who is in employment or include you in their benefit claim

This bursary cannot be used for:

- Housing costs
- General living expenses
- Supporting partners or children

You may be invited to attend a short interview to discuss your application and circumstances.



# GATESHEAD COLLEGE FOUNDATION.

This is our own charity set up to help more people afford to study and come to our College. The Foundation funds are offered in addition to the bursaries and grants provided by the Government.

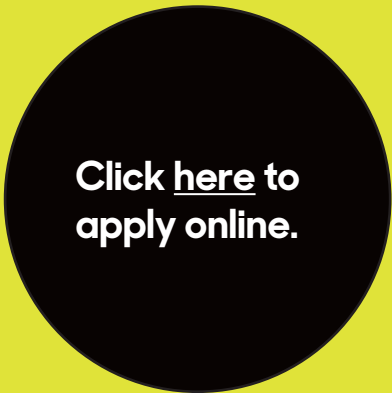
The Foundation can help towards those amazing experiences that will really make your CV pop or anything that will give you the employment edge.

Click [here](#) to apply and find out more or speak to your teacher.



# HOW TO APPLY.

Applications for funding support open in July 2026



Click [here](#) to apply online.

If you can't apply online, contact the Support Funds Team  
[support.funds@gateshead.ac.uk](mailto:support.funds@gateshead.ac.uk)  
**0191 490 4627**

Our online application PayMyStudent allows you to apply, access and view your funding payments easily and securely. With the online portal you'll be able to see any upcoming payments and view your payments status.

---

## Fee Support

The application for Fee Support is a paper based form.

To access the Fees Support application please email [support.funds@gateshead.ac.uk](mailto:support.funds@gateshead.ac.uk) or call **0191 490 4627**.

The application form will also be available from Support Funds Team at Baltic Campus and at most reception points.

Please make sure you read our terms and conditions alongside completing an application.

---

## How long will it take?

It usually takes about 10 working days to process your completed application, but we will try to do it as quickly as possible.

---

## If you're refused

If you disagree with our assessment, you can ask for a review however, if the funds have run out or you're not eligible, there's no grounds for appeal.

---

**I am 19 – can my family claim Child Benefit?**

If you returned to or have continued in full time education before reaching the age of 19, Child Benefit can still be paid until you reach 20 or you complete your course – whichever is the soonest.

---

**I am claiming Jobseeker's Allowance/ Universal Credit – will this stop if I study full time?**

It is always recommended to seek advice when claiming welfare benefits and studying on a full-time basis. You must speak to your work coach regarding your course. If Jobcentre Plus require confirmation from the College regarding your hours, contact the Support Funds Team and we can advise you on this. If you have any problems, please contact your Jobcentre Plus.

---

**Need course confirmation?**

If you or your parent/carer require confirmation of course details for benefits, child benefit or council tax purposes please contact us by email or phone with your request. Once we receive a request we will produce a confirmation letter.

Contact Support Funds Team on **0191 490 4627** or email **[support.funds@gateshead.ac.uk](mailto:support.funds@gateshead.ac.uk)**

---

## How to claim Child Benefit

You can obtain a claim pack by ringing the Child Benefit Helpline **0300 200 3100** or by downloading it from the HMRC website at **[www.hmrc.gov.uk/childbenefit](http://www.hmrc.gov.uk/childbenefit)**.

---

## Where to get more information about welfare benefits

To find your nearest Citizens Advice and for a fact sheet about welfare benefits, debt, housing and much more, go to **[www.adviceguide.org.uk](http://www.adviceguide.org.uk)**.

If you want to see how Universal Credit will affect tax credits go to **[hmrc.gov.uk/taxcredits/universal-credit](http://hmrc.gov.uk/taxcredits/universal-credit)**.

For general information about welfare benefits **[www.gov.uk](http://www.gov.uk)**.

## In an emergency?

If you're in a crisis (like being homeless or out of money), contact the Support Funds Team during term time and office hours.

If out of hours, please visit the webpage for your local area for support.

- Gateshead  
**[www.gateshead.gov.uk](http://www.gateshead.gov.uk)**
- South Tyneside  
**[www.southtyneside.gov.uk](http://www.southtyneside.gov.uk)**
- Newcastle  
**[www.newcastle.gov.uk](http://www.newcastle.gov.uk)**
- Sunderland  
**[www.sunderland.gov.uk](http://www.sunderland.gov.uk)**
- North Tyneside  
**[my.northtyneside.gov.uk](http://my.northtyneside.gov.uk)**



# CONTACT THE SUPPORT FUNDS TEAM.

You'll find us at the Baltic Campus most of the time but we visit other campuses. We assess and administer all support funds offered by Gateshead College and can give you information and advice on all aspects of financial support that may be available to you. We can also refer you to other support services offered by the College.

You can also speak to people from Your Student Services team on your reception at each campus and they can signpost you to the right help or get in touch with us for you.

**0191 490 4627**

**[support.funds@gateshead.ac.uk](mailto:support.funds@gateshead.ac.uk)**





**@GATESHEADCOLLEGE**

Every effort has been made to ensure that this information is correct at the time of writing however details may be subject to change. This book is for information only and not an authoritative statement of the law.

WWW.  
GATESHEAD.  
AC.UK