

**GATESHEAD  
COLLEGE**



# **YOUR COLLEGE MONEY GUIDE.**

**Support for 16-18 year olds**


**2026/2027**

**YOUR  
STUDENT  
SERVICES.**

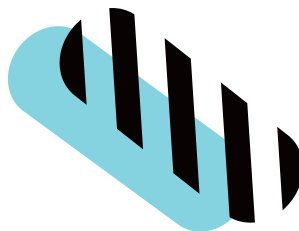


# YOUR SUPPORT.

|                                |    |
|--------------------------------|----|
| Free meals                     | 4  |
| 16 – 18 Bursary Fund           | 5  |
| Travel                         | 7  |
| Course grants                  | 7  |
| Childcare support              | 8  |
| How to apply                   | 9  |
| Gateshead College Foundation   | 10 |
| Confirmation of course details | 11 |
| What to do in an emergency     | 11 |
| How to contact us              | 11 |



If you know someone who requires this information in an alternative format, e.g. large print, Braille, audio or another language or help with understanding the information, please call 0191 490 4611 or email [start@gateshead.ac.uk](mailto:start@gateshead.ac.uk)



# HELLO.

**We've put together this guide to help you understand what financial support is available and how to get it. Whether you need help with meals, travel, equipment or childcare, this guide breaks it all down in a way that's easy to follow.**



# FREE MEALS AT COLLEGE.



**You might be able to get a free meal each day you're at college if:**

- You're a Gateshead College student
- You're under 19 on 31 August 2026 or up to 24 with an Education Healthcare Plan (EHCP)
- You or your parent/carer receive one of the following:
  - Universal Credit
  - Employment and Support Allowance (income related only)
  - Guaranteed Pension Credit
  - Support under part VI of the Immigration and Asylum Act 1999



**You can't get free meals if:**

- You're an apprentice
- You're on a higher education course
- You're under 16 or over 19 on 31 August 2026 (unless you are part of the group stated above)
- You don't get the listed benefits

# 16-18 BURSARY FUND.

## Higher Rate Bursary - Up to £1,200 a year

You might get this if:

- You live independently and get Income Support or Universal Credit (financially supporting yourself or someone who is dependent on you and living with you such as a child or partner)
- You get both Employment and Support Allowance (ESA) and Disability Living Allowance or Personal Independence Payment
- You're in care or have been in care

This bursary is for course related costs and helps with things like travel, meals and course equipment. It's only for full-time students attending a full year course and depends on your needs. If you're on a shorter or part time course, your bursary will be reduced.

You might not get a bursary if you do not have financial needs or if your costs are already covered from other sources.



## Discretionary Bursary

This is based on your household income and is for full-time students. It helps towards things like travel and course costs, but it might not cover everything and is subject to funds being available.

It's only for full-time students attending a full year course and depends on your needs. If you're on a shorter or part time course, your bursary will be reduced.

You can apply if you or your partner or your parents/carers receive one of the following:

- Income-based Jobseeker's Allowance
- Income-related Employment and Support Allowance
- Universal Credit
- Guaranteed Pension Credit

If your family are employed or self-employed, you can still apply if household income is:

- Under £30,000 (if you live with one parent/carer)
- Under £35,000 (if you live with two parents/carers)

This is based on gross annual current income including any Working Tax Credit/Universal Credit.

This bursary is not an entitlement or to support general living costs. Make sure you apply as soon as you can as this fund is allocated on a first come first served basis.

You'll need to explain why you need help and keep your attendance above 92%. Awards are processed once your attendance is confirmed so you may need to cover your travel expenses for the first week or so and may want to buy your own kit and equipment before starting the course. We aim to allocate awards as soon as we can so there are no barriers to you starting college.



## Travel costs

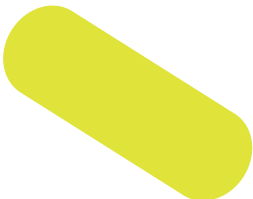
If you live more than a mile from college, you might get help with travel. What you receive will depend on your main method of transport and where you travel from. It could be a student travel ticket (Go North East) or money paid every half term.

If your local council has a travel scheme, apply there first. If you can't use public transport because of a disability, get in touch with your local council in the first instance to see how they can support you to get to college.

## Course grant

Need help buying a uniform or kit for your course? You might get a grant paid straight into your bank account to help towards this (it may not cover the full costs).

If you receive any payments for equipment, meals or travel, you'll need to keep your receipts or other proof of purchase. These must show the date what you bought and how much it cost. More details will be given once you apply.



## Childcare support

If you're under 20 and need help with childcare, you can apply for the Care to Learn scheme. It's not based on income, but you must use a registered childcare provider.

Max support: £180 per child per week

You need to find a childcare provider prior to applying for help with costs

Awards are calculated on your timetable and when you are due to attend your course (placements are also supported). If you use childcare outside of these hours you will have to pay those fees.

To apply for Care to Learn Childcare please complete the bursary application and give the details of your chosen childcare provider.

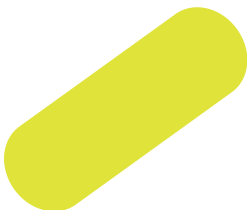
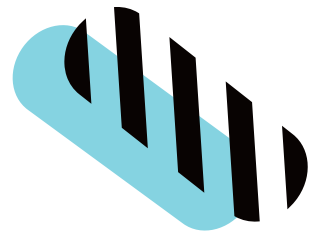
You must have a bank account in your name to get any payments. If you don't have one, you'll need to open one. Payments can't be made into a parent's, carer's or anyone else's account (unless you have an appointee to handle payments).

### Don't have a bank account yet?

Don't worry, it's easy to set one up. Most high street banks offer basic bank accounts for students aged 16 and over. These accounts are free and don't require you to have a job or income.

### Here's how to get started:

1. Choose a bank – Some options include Barclays, Lloyds, NatWest, HSBC and Santander.
2. Apply online or visit a branch – you'll usually need:
  - Proof of ID (like a passport or provisional driving licence)
  - Proof of address (like a utility bill)
3. Ask for a basic account – these are designed for students and don't come with overdrafts or fees.



# HOW TO APPLY.

Applications open in  
July 2026

Click [here](#) to  
apply online.

If you can't apply online, contact the  
Support Funds Team  
[support.funds@gateshead.ac.uk](mailto:support.funds@gateshead.ac.uk)  
0191 490 4627

Our online application PayMyStudent allows you to apply, access and view your funding payments easily and securely. With the online portal you'll be able to see any upcoming payments and view your payments status.

## How long will it take?

It usually takes about 10 working days to process your completed application, but we will try to do it as quickly as possible.

---

## If you're refused

If you disagree with our assessment, you can ask for a review however, if the funds have run out or you're not eligible, there's no grounds for appeal.

# GATESHEAD COLLEGE FOUNDATION.

This is our own charity set up to help more people afford to study and come to our College. The Foundation funds are offered in addition to the bursaries and grants provided by the Government.

The Foundation can help towards those amazing experiences that will really make your CV pop or anything that will give you the employment edge.

Click [here](#) to apply and find out more or speak to your teacher.



## Need course confirmation?

If you or your parent/carer require confirmation of course details for benefits, child benefit or council tax purposes please contact us by email or phone with your request. Once we receive a request we will produce a confirmation letter.

Contact Support Funds Team on **0191 490 4627** or email **support.funds@gateshead.ac.uk**

## In an emergency?

If you're in a crisis (like being homeless or out of money), contact the Support Funds Team during term time and office hours.

If out of hours, please visit the webpage for your local area for support.

- Gateshead  
**[www.gateshead.gov.uk](http://www.gateshead.gov.uk)**
- South Tyneside  
**[www.southtyneside.gov.uk](http://www.southtyneside.gov.uk)**
- Newcastle  
**[www.newcastle.gov.uk](http://www.newcastle.gov.uk)**
- Sunderland  
**[www.sunderland.gov.uk](http://www.sunderland.gov.uk)**
- North Tyneside  
**[my.northtyneside.gov.uk](http://my.northtyneside.gov.uk)**

# CONTACT THE SUPPORT FUNDS TEAM.

You'll find us at the Baltic Campus most of the time but we visit other campuses. We assess and administer all support funds offered by Gateshead College and can give you information and advice on all aspects of financial support that may be available to you. We can also refer you to other support services offered by the College.

You can also speak to people from Your Student Services team on your reception at each campus and they can signpost you to the right help or get in touch with us for you.

**0191 490 4627**  
**[support.funds@gateshead.ac.uk](mailto:support.funds@gateshead.ac.uk)**

Every effort has been made to ensure that this information is correct at the time of writing however details may be subject to change. This book is for information only and not an authoritative statement of the law.



**@GATESHEADCOLLEGE**

WWW.  
GATESHEAD.  
AC.UK